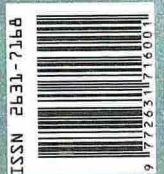


— CELEBRATING LIFE IN THE CHILTERN —

WILDFLOWER

MAGAZINE

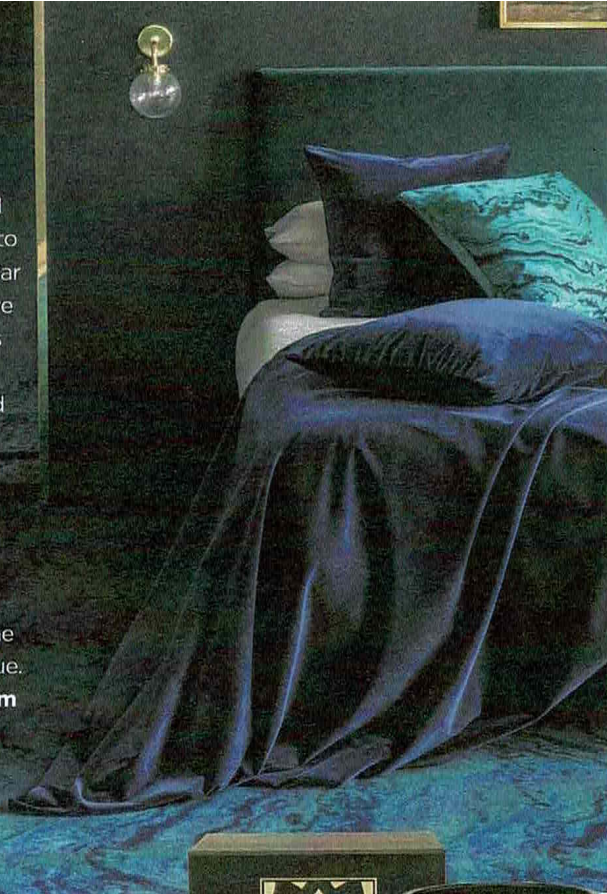
WINTER 2018
ISSUE 2
£4



LIVE | EXPLORE | GROW | ESCAPE

FLOOR SHOW

Sumptuous shades and opulent designs are key to some seriously spectacular carpets at the Alternative Flooring Boutique. This collaboration with the quirky flooring firm and luxury fabric house Zoffany brings five designs ranging from crackle to mosaic in 16 gorgeous, jewel-like colours. Shown here is the swirling Serpentine in dramatic Malachite blue. alternativeflooring.com

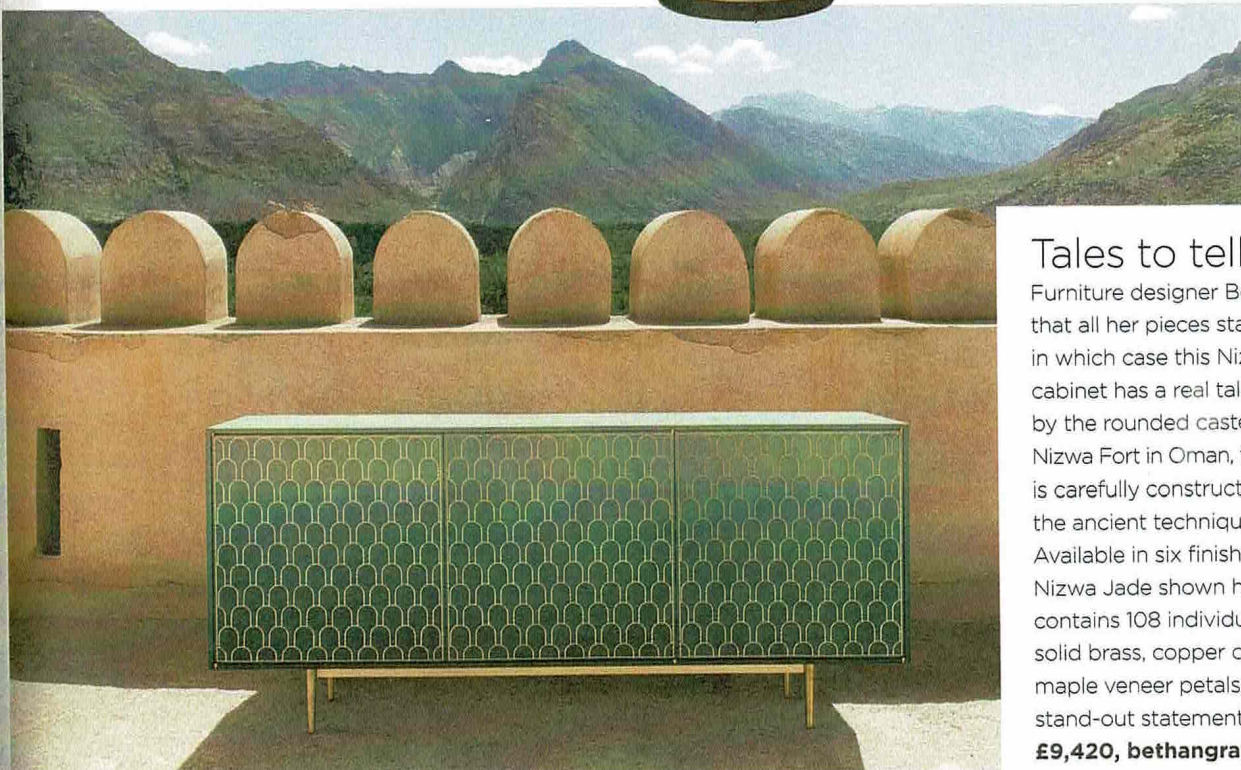


CREATE A FIVE-STAR SCENT IN YOUR HOME WITH THIS CANDLE FROM CAFÉ WOLSELEY, BIGGESTER VILLAGE — OUTPOST OF THE ELEGANT PICADILLY EATERIE. IN TWO SIZES, IT COMBINES A TRIO OF EXQUISITE SCENTS. £49 and £98, cafewolseley.com



BLACK ARTS

ECLECTIC TO THE CORE, BLACKPOP'S COLLECTOR'S COLLECTION TAKES ITS CUE FROM THE TREASURE TROVE THAT IS THE SIR JOHN SOANE MUSEUM IN LONDON TO PRODUCE AN EXCITING RANGE OF WALLPAPERS, FABRICS AND RUGS. PRICES START AT £144, WITH A PERCENTAGE OF EACH SALE GOING DIRECTLY TO THE MUSEUM. blackpop.co.uk



Tales to tell

Furniture designer Bethan Gray states that all her pieces start with a story — in which case this Nizwa three-door cabinet has a real tale to tell. Inspired by the rounded castellations of the Nizwa Fort in Oman, the elegant pattern is carefully constructed by hand using the ancient technique of marquetry. Available in six finishes, including Nizwa Jade shown here, each door contains 108 individual elements of solid brass, copper or nickel and 118 maple veneer petals, making this a stand-out statement in your home. £9,420, bethangray.com